

HEATSTRIP ELEGANCE 2400 WATT

ELP-70-103

Elegance 2400W can be used for heating both indoors and outdoors, where it can heat up to 4-6 m². The patio heater can be installed at your own discretion.

TECHNICAL SPECIFICATIONS

Appearance

RAL9003

Features

100 cm

Type

Heatstrip

Appearance

Colour	Steel
Colour	White
Glas included	No
Materials	Aluminum

Distance

Distance to Combustible Materials	230 cm
-----------------------------------	--------

Features

Ampere	10
--------	----

Features

Control	Manual
---------	--------

Features

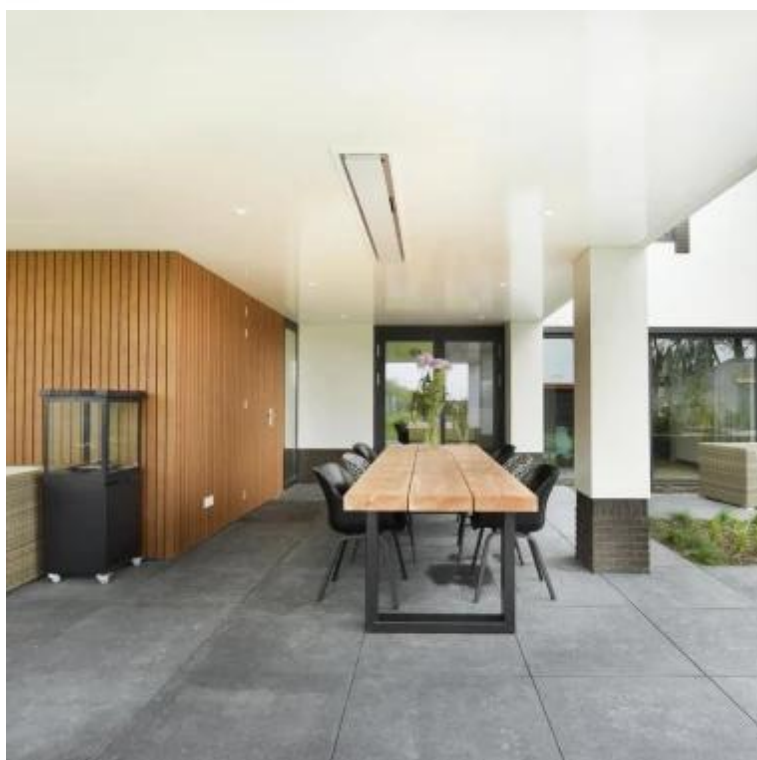
Flame	No
-------	----

Features

Fuel	Electricity
Heat output (max)	2,4 kW

Features

Heating	4-6 m2
---------	--------



Features

Remote control	Yes (add-on)
Requires electricity	230-240V
Requires electricity	Yes

Features

Timer	Yes
Type of Light	Black radiation panel

Size

Depth	17 cm
Height	4,85 cm
Length/Width	120,4 cm
Weight	7 kg

Type

Brand	Heatstrip
Use	Indoor
Use	Outdoor
Warranty	2 years

